

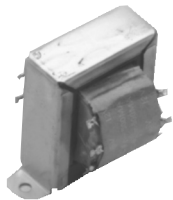
# POWER TRANSFORMERS

## Single Secondary

Style A



Style S



Style NV



Style C



All Primaries 50/60 Hz.

Sec.	STANCOR PART NUMBER	Primary Volts	Secondary		Style	Insulation Test RMS Volts	Termination		DIMENSIONS-INCHES					Weight (lbs.)	Agency Certification
									Volts	Amps.	H	Case W	D		
							Pri.	Sec.				MW	MD		
A	P-8629	117	2.5	1.0	A	1500	Leads	Leads	1.38	2.38	1.38	2.00	-	0.4	-
	P-6133	117	2.5 C.T.	5.0	S	7500	Leads	Leads	2.75	3.13	2.00	2.81	-	1.5	-
	P-6454	117/107	2.5 C.T.	10.0	S	7500	Leads	Leads	3.25	3.63	1.88	3.13	-	2.5	-
	P-6467	117	5.0 C.T.	3.0	A	2500	Leads	Leads	2.00	3.25	2.13	2.81	-	1.4	-
B	P-6135	117	5.0 C.T.	10.0	NV	2500	Leads	Leads	3.13	2.50	2.50	2.00	2.06	3.0	-
	P-8385	117	6.3 C.T.	0.3	A	1500	Leads	Leads	1.25	2.13	1.38	1.75	-	0.3	-
	P-6465	117	6.3 C.T.	0.6	A	1500	Leads	Leads	1.38	2.38	1.50	2.00	-	0.4	UL
	P-8705	230	6.3 C.T.	0.6	A	1500	Leads	Leads	1.38	2.38	1.50	2.00	-	0.4	-
C	P-8389	117	6.3	1.0	A	1500	Leads	Leads	1.75	2.88	1.63	2.38	-	0.6	UL
	P-6134	117	6.3 C.T.	1.2	A	3000	Leads	Leads	1.75	2.88	1.88	2.38	-	0.8	UL
	P-8190	117	6.3	1.2	A	5000	Leads	Leads	2.00	3.25	1.88	2.81	-	1.0	-
	P-6466	117	6.3 C.T.	3.0	A	2500	Leads	Leads	2.00	3.25	2.13	2.81	-	1.4	-
D	P-8648	117	6.3 C.T.	4.0	A	1500	Leads	Leads	2.38	3.75	2.13	3.13	-	1.6	-
	P-6456	117/107	6.3 C.T.	6.0	A	2000	Leads	Leads	2.38	3.75	2.38	3.13	-	2.0	-
	P-8651	117	6.3 C.T.	8.0	A	1500	Leads	Leads	2.63	4.00	2.63	3.56	-	2.4	-
	P-6464	117	6.3 C.T.	10.0	C	2000	Leads	Leads	3.50	2.81	3.25	2.25	2.00	3.5	-
E	P-6308	117/107	6.3 C.T.	10.0	NV	2500	Leads	Leads	3.50	2.81	2.63	2.25	2.00	3.4	-
	P-6309†	117/107	6.3 C.T.	20.0	NV	2500	Leads	Leads	4.69	3.75	3.50	3.00	2.47	6.7	-
	P-5015	117	7.5 C.T.	4.0	NV	2500	Lugs	Lugs	3.13	2.50	2.25	2.00	2.13	2.7	-
	P-6138	117	7.5 C.T.	8.0	NV	2500	Leads	Leads	3.88	3.13	3.38	2.50	2.22	4.7	-
F	P-8652	117	10.0 C.T.	1.0	A	1500	Leads	Leads	2.00	3.25	2.00	2.81	-	0.9	-
	P-8653	117	10.0 C.T.	2.0	A	1500	Leads	Leads	2.00	3.25	2.00	2.81	-	1.3	-
	P-8380	117	10.0 C.T.	3.0	A	1500	Leads	Leads	2.25	3.75	2.25	3.13	-	1.6	-
	P-5016	117	10.0 C.T.	4.0	NV	2500	Lugs	Lugs	3.44	2.81	2.50	2.25	2.00	3.3	-
G	P-8655	117	10.0 C.T.	6.00	NV	1500	Leads	Leads	3.13	2.50	2.63	2.00	2.06	3.10	-
	P-8656	117	10.0 C.T.	8.00	NV	1500	Leads	Leads	3.50	2.81	3.00	2.25	2.28	4.10	-
	P-8390	117	12.0	0.15	A	1500	Leads	Leads	1.25	2.13	1.25	1.75	-	0.25	UL
	P-8391	117	12.0	0.35	A	1500	Leads	Leads	1.38	2.38	1.38	2.00	-	0.35	-
H	P-8392	117	12.0	0.70	A	1500	Leads	Leads	1.75	2.88	1.63	2.38	-	0.60	UL
	P-8393	117	12.0	1.20	A	1500	Leads	Leads	2.00	3.25	1.63	2.81	-	0.85	-
	P-8657	117	12.0	2.00	A	1500	Leads	Leads	2.00	3.25	2.13	2.81	-	1.30	-
	P-8658	117	12.0	4.00	A	1500	Leads	Leads	2.63	4.00	2.25	3.56	-	2.30	-
I	P-8659	117	12.0	6.00	NV	1500	Leads	Leads	3.50	2.88	2.63	2.25	2.13	3.40	-
	P-8660	117	12.0	8.00	NV	1500	Leads	Leads	3.88	3.18	2.75	2.50	2.13	4.30	-
	P-8384	117	12.6 C.T.	1.00	A	1500	Leads	Leads	2.00	3.25	1.75	2.81	-	0.90	-
	P-8550	117	12.6 C.T.	1.50	A	1500	Leads	Leads	2.00	3.25	2.00	2.81	-	1.30	-

† Electrostatic shield

\* Agency Certification Note: UL Recognized (File E68100, Guide #XPTQ2)